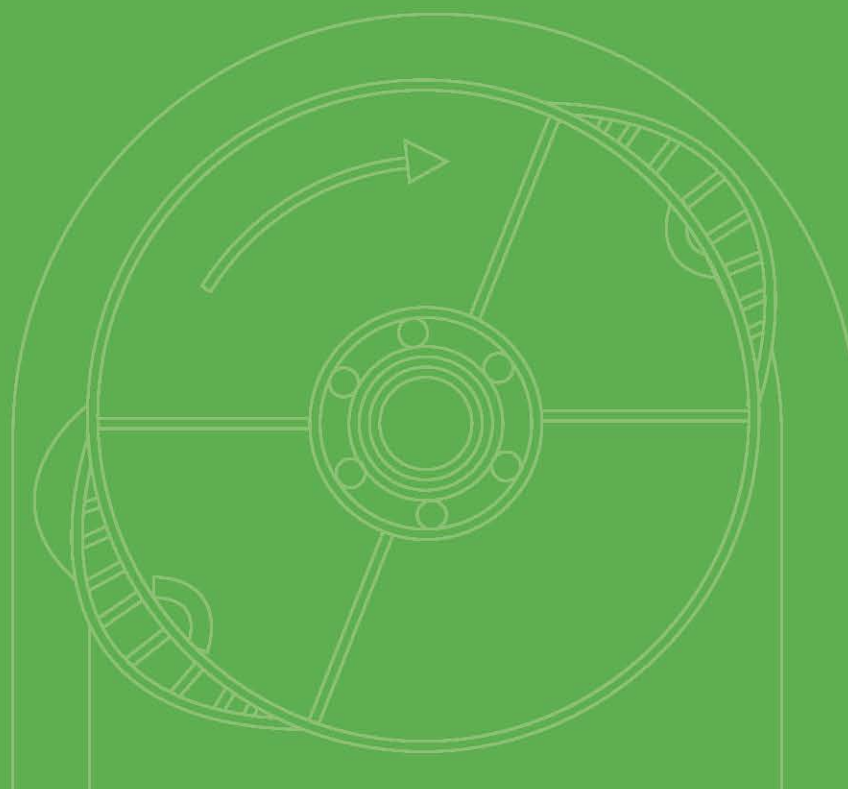




VERDERFLEX OEM

Any questions? You may still have questions and/or comments after reading this brochure. Please feel free to contact us on +44 (0)1924 221 020 You can also respond via email to info@verderflex.com. For more information about Verderflex please visit our website www.verderflex.com

Panel Mounted Peristaltic Pumps



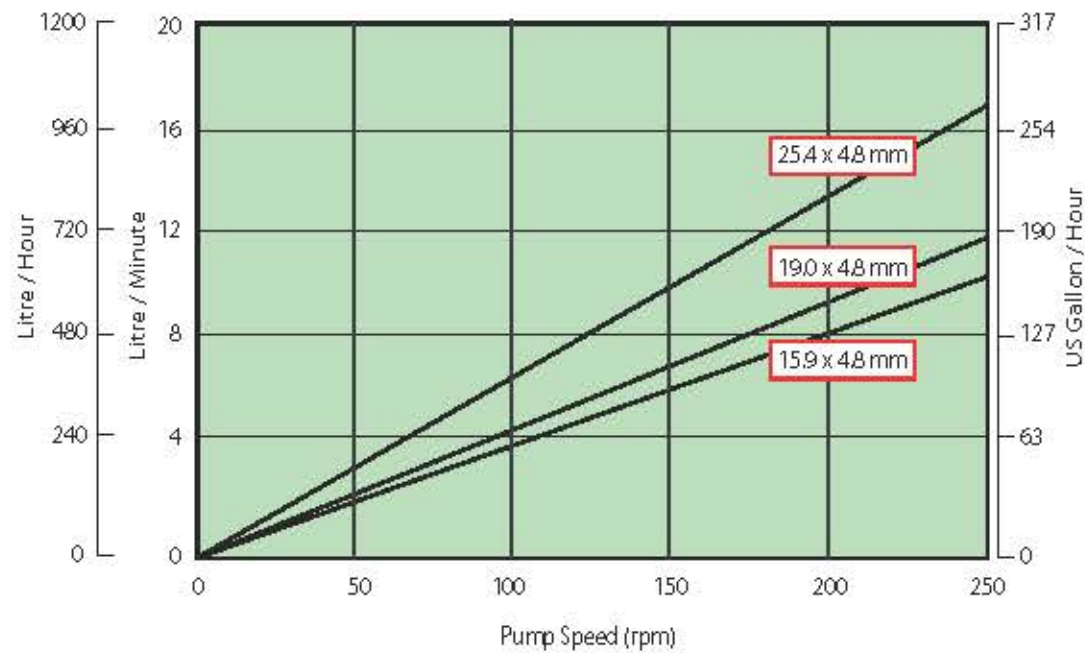
S40 - 3 roller

The S40 pump head design features a quick tube change, ergonomic design for ease of use and accepts three standard tube sizes.

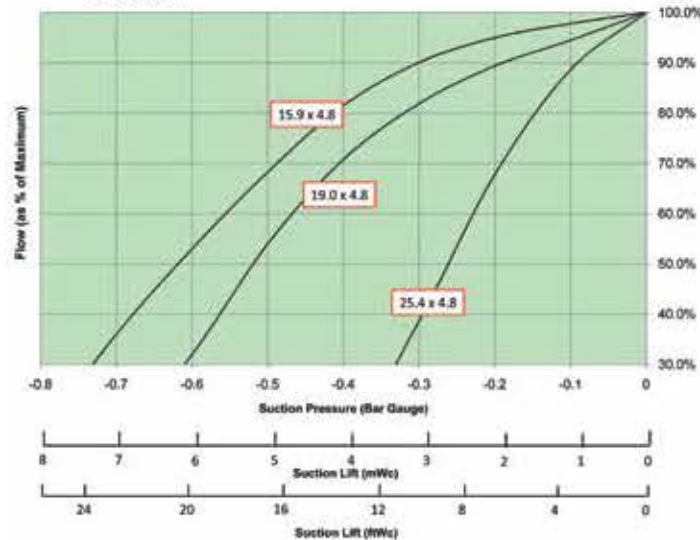


- Flow rates up to 17 l/min (269 US GPH)
- Pressures up to 2.0 Bar (29 PSI)
- Typically used in:
 - Chemical dosing,
 - Industrial fluid transfer,
 - Heavy duty environments

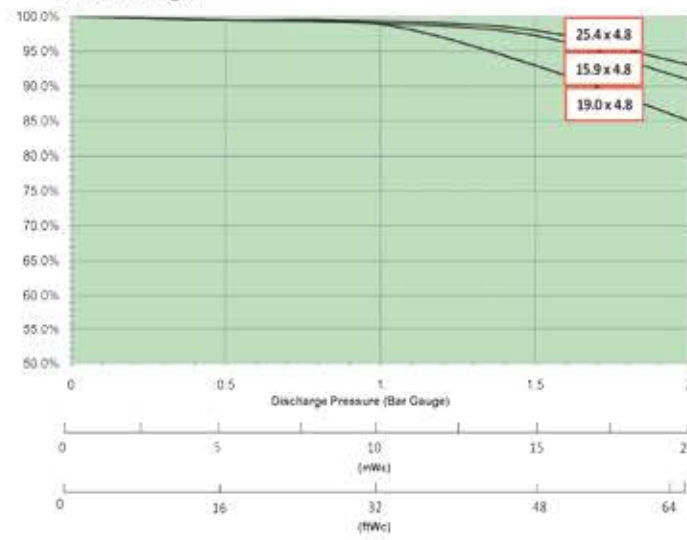
S40 - 3 Roller Free Flow Curve



Suction



Discharge



Flow rates with water at 20 °C (68 °F)

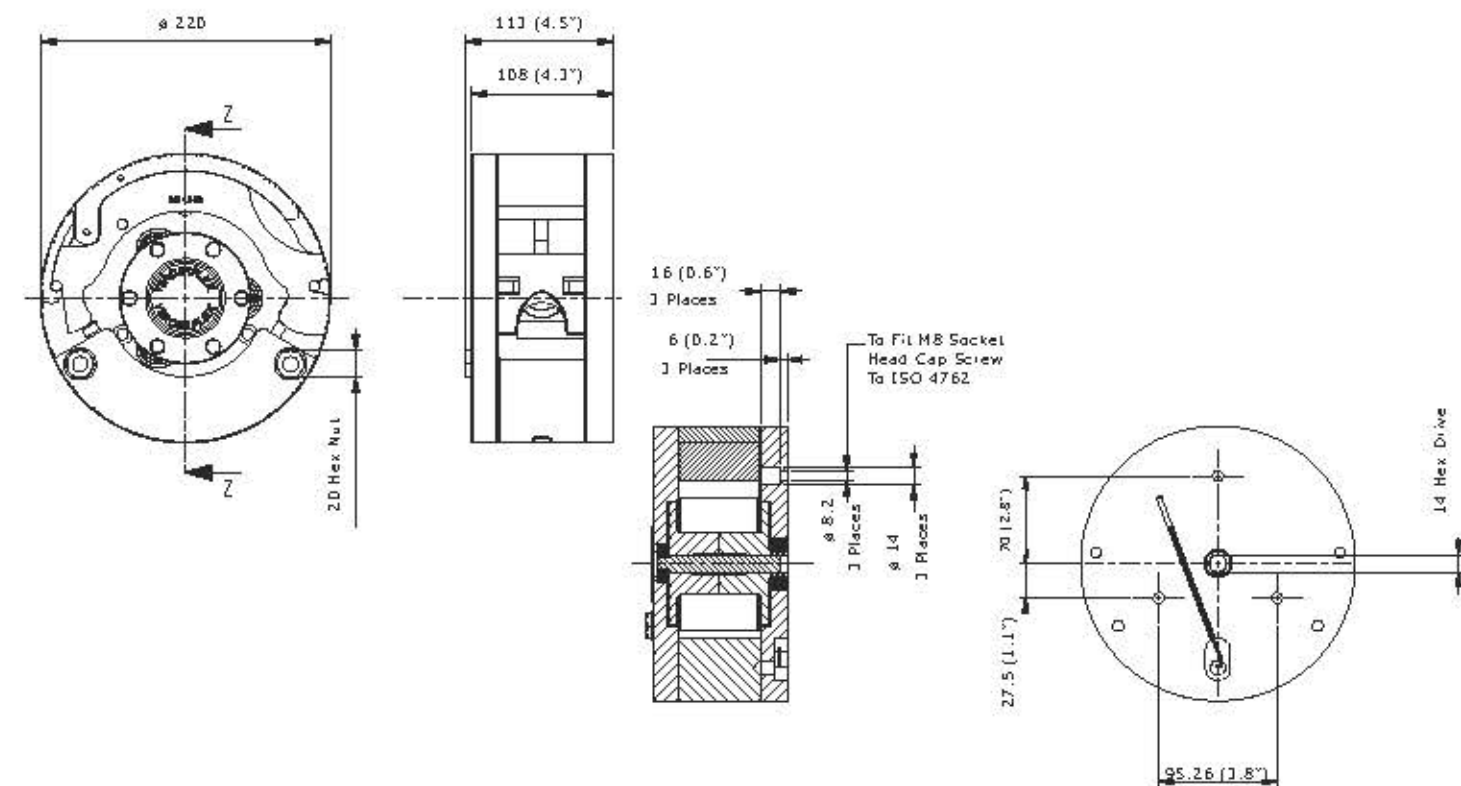
Technical Overview

Pump Specifications	
Easy-fit tube saddle for rapid tube changes	BS EN 1474 6082 TF Aluminium Alloy construction
Fits a range of tube sizes and materials	Stainless Steel rotor shaft
Simple adjustable tube clamping system	Polyoxymethylene (POM) clamp-base
Fits a variety of pump enclosures	Polymethylmethacrylate (PMMA) clear cover
Multi-channel capability	316 Stainless Steel Rollers
Working Temperature	5 - 45°C or 41 - 113°F (T _a = +20°C or 68°F)
Tube	Verderprene and Silicone
Tube Sizes	15.9 x 4.8mm, 19.0 x 4.8mm, 25.4 x 4.8mm

Tube Size Options

Tube (ID x WT)	60 RPM	113 RPM	151 RPM	240 RPM
15.9 x 4.8 mm (5/8" x 3/16")	2.7 l/min 162 l/hr 43 GPH	5.3 318 84	6.6 396 104	10.6 637.7 168
19.0 x 4.8 mm (3/4" x 3/16")	3.4 l/min 206 l/hr 54.5 GPH	7 422 111	7.3 441 116	11.9 715 189
25.4 x 4.8 mm (1" x 3/16")	5.5 l/min 333 l/hr 88 GPH	11.7 703 185	10.7 644 170	17.0 1,020 269

General Arrangement Drawing and Mounting Positions



All dimensions in millimetres and inches